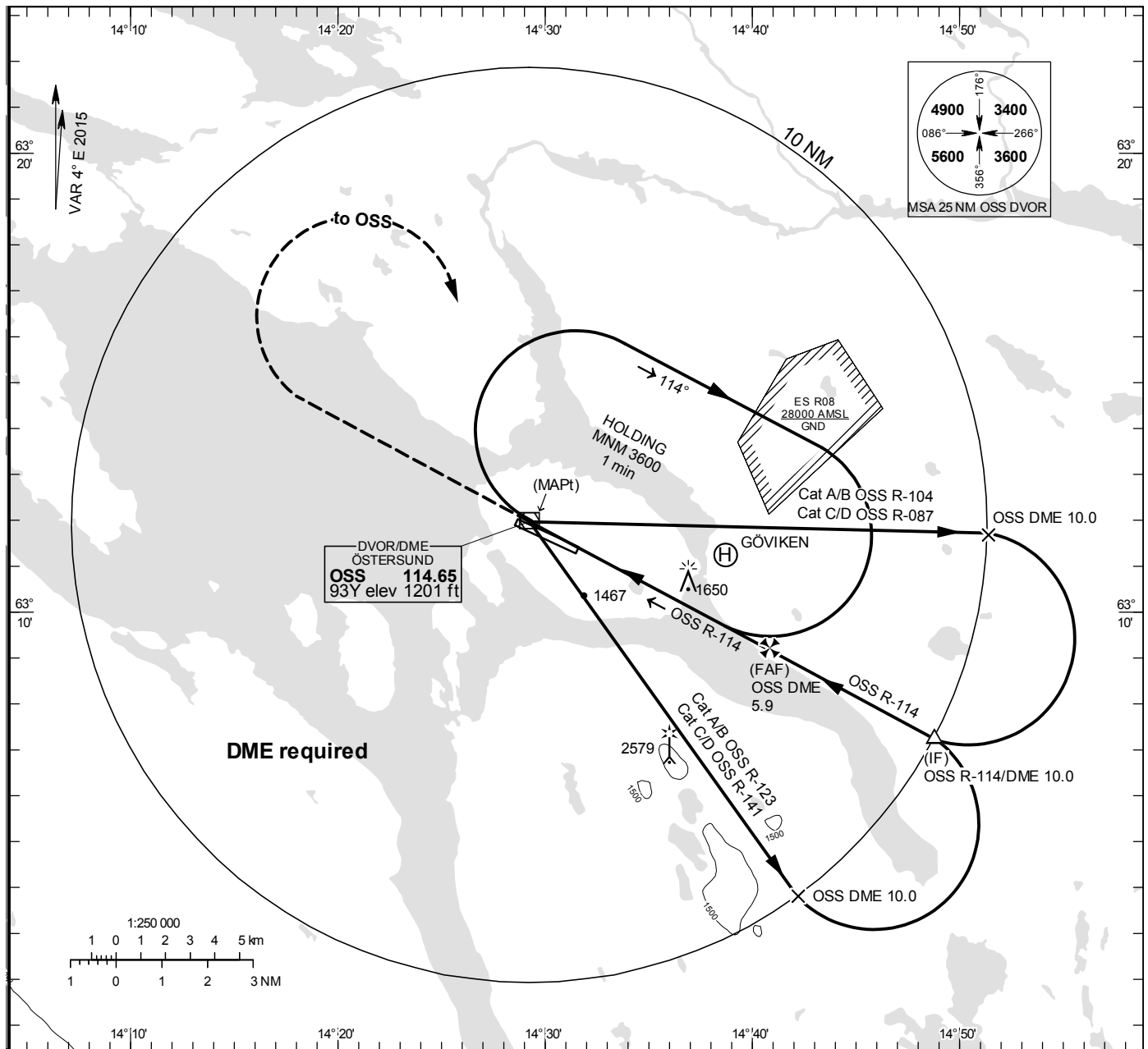


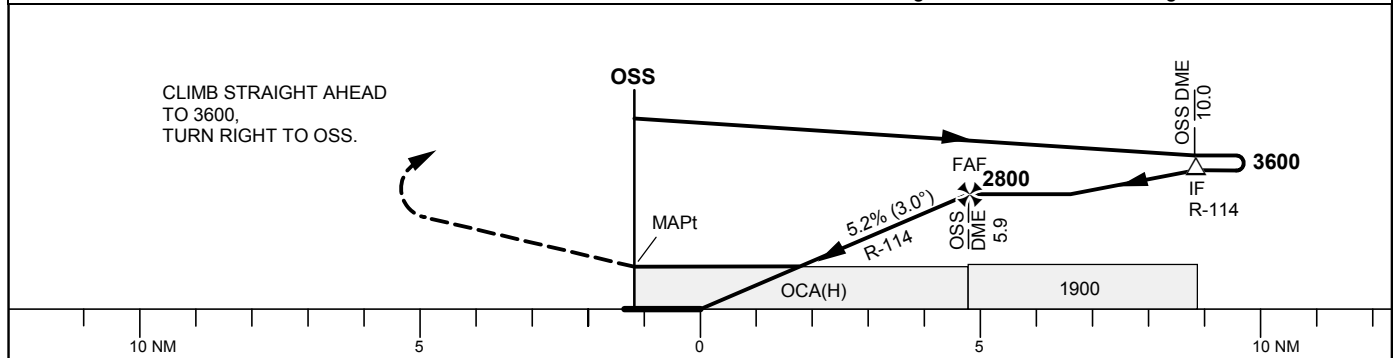
**ÄRE ÖSTERSUND****VOR RWY 30****INSTRUMENT  
APPROACH  
CHART – ICAO****THR ELEV 1233 ft, AD ELEV 1233 ft**

OCH are related to THR.  
 Circling OCH are related to AD ELEV.  
 BRG are MAG  
 ALT. HGT and ELEV in ft.

**ÖSTERSUND TOWER 135.655****TA 6000 ft AMSL**

Final APCH line offset 3°

\*Timing not authorized for defining the MAPt



OCA (H)					Final approach		Distance FAF-MAPt 5.9 NM*						
Cat of ACFT	A	B	C	D	DME OSS NM	5				4			
					ALT	2500				2180			
Straight-in Approach	1900(670)				GS	kt	80	100	120	140	160	180	
					Time	min:s	4:27	3:34	2:58	2:33	2:13	1:59	
Circling	1900(670)	1950(720)	2050(820)	2980(1750)	Rate of descent	ft/min	425	530	635	745	850	955	

CHANGE: Editorial